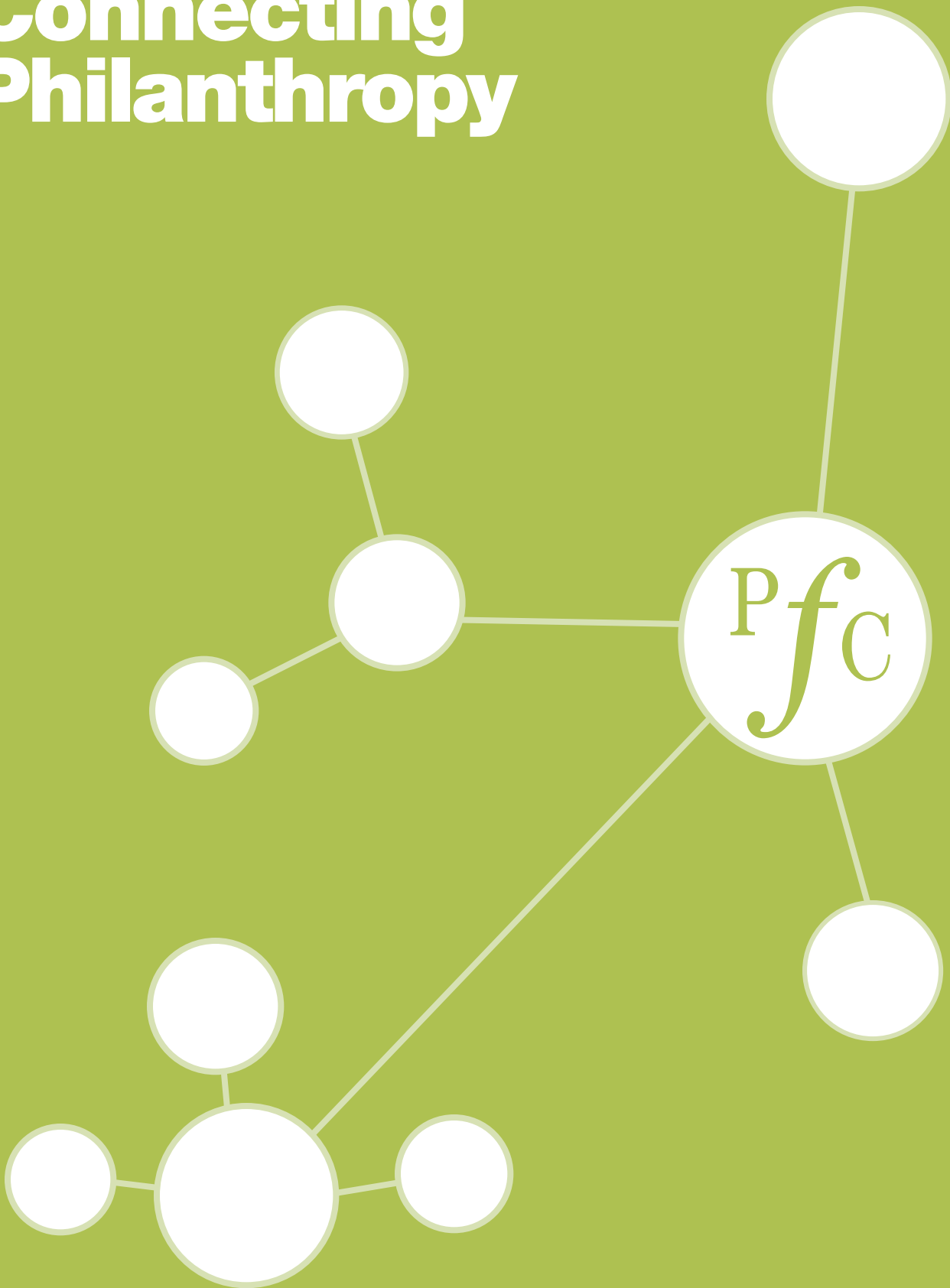


# Connecting Philanthropy



Philanthropic Foundations Canada  
2010 Annual Report

A decorative teal line starts from the top right, goes horizontally to the right, then vertically down to a teal circle, and then continues vertically down to the top right corner of the main text box.

PFC promotes the growth and development of effective and responsible foundations and organized philanthropy in Canada through provision of membership services, resources and advocacy.

Philanthropic Foundations Canada is a national member association of grant-making foundations and charitable organizations and a registered charity.

A short vertical teal line connects the bottom left corner of the main text box to the top left corner of the registration number box.

Charitable registration number: 89295 2128 RR0001

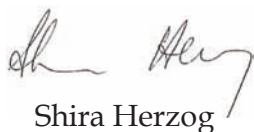
## Message from Chair & President

The year 2010 marked the end of Philanthropic Foundations Canada's first full decade as a membership network for Canadian organized philanthropy. Each year during this decade, more foundations and other private funders made the choice to join the association. We are now moving steadily past the number of 100 members. Why do our members join and renew their participation every year in PFC? We believe it is because funders, whether large or small, new or experienced, seek and recognize the value of working within a learning community. You have told us that the connections formed through PFC are very meaningful. This is why we chose *Connecting Philanthropy* as the theme of this annual report.

Connections take many forms. There is the person-to-person connection that happens at PFC member lunches and learning events. There is the connection to new knowledge that is provided through the PFC newsletter and web site. There is the connection to expertise through the PFC staff and through the philanthropy professionals that share their advice with members. And there is the connection to communities where PFC members live and work and to the wider philanthropic community both in Canada and across our borders.

PFC is committed to being a connector. We see ourselves as a meeting place, a "hub", for organized philanthropy in Canada. Through our 2011 national conference, our frequent regional gatherings and our constantly expanding website, we continue to create new opportunities for grantmakers to connect and learn from each other. We are committed to our vision of creating a knowledge hub in a growing philanthropic field so that our members can take advantage of the extraordinary opportunities for private philanthropy that we know will exist in the coming decade.

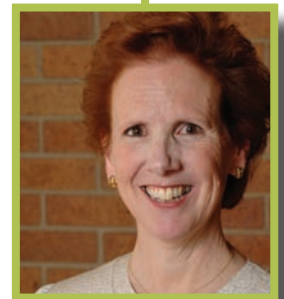
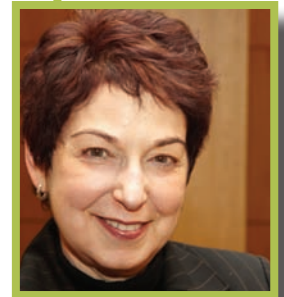
We want to express our appreciation for the wise counsel and the personal commitment of the members of the 2010-2011 Board. In particular, we recognize the contribution of the following members of the Board who are retiring in 2011: Nancy Rosenfeld, Claudine and Stephen Bronfman Family Foundation, Angie Killoran, The Lawson Foundation, Hulene Montgomery, Lyle S. Hallman Foundation, and Peter Warrian, The Lupina Foundation. All have been generous with their time, their ideas and their colleagues. We want to pay a special tribute to Peter Warrian, a Past Chair of PFC, who has served the organization extraordinarily well over ten years of service on the Board and who has been an important contributor to building the PFC network with his peers. PFC has benefitted greatly from the contributions of these directors and we are very much in their debt.



Shira Herzog  
Chair



Hilary Pearson  
President



*Through our 2011 national conference, our frequent regional gatherings and our constantly expanding website, we continue to create new opportunities for grantmakers to connect and learn from each other.*

## Connecting our Members

In 2010 PFC members had many opportunities to connect and to learn from each other. Our education program was particularly popular. Eight peer-to-peer events featured wide-ranging discussions on topics such as investment strategy, evaluation and emergent learning, funder collaboration, and disaster grantmaking. These events were held in Calgary, Toronto and Montreal. They were complemented by six webinar learning sessions on topics such as foundation governance, mission-related investing and measuring impact.



PFC highlighted the quickly changing landscape and new approaches to financing the charitable sector during a full day symposium in Toronto in early December. The symposium was recorded on video and posted on the web site, which we are developing as a knowledge hub for organized philanthropy and for the benefit of our members. Presentations and resources created for our learning events are all being posted regularly in the knowledge center.

During 2010, PFC conducted exclusive member surveys on investment performance and disbursement strategies, and on compensation practices and policies. These surveys are designed to support our members as they make their annual strategic operational decisions. In June, PFC published a new practice guide for our members, distributing close to 200 copies of ***Good Governance: A Guide for Canadian Foundations***. The guide is available publicly.

PFC also monitors public policy on behalf of its members. In 2010, we distributed two mem-

ber advisories with updates on regulatory and tax changes of interest to registered charitable foundations. Topics included charitable compensation disclosure; the excess business holdings rules; the disbursement quota changes; the *Canada Not-For-Profit Corporations Act (2009)* and *The Ontario Not-for-Profit Corporations Act, 2010*. In October, PFC appeared before the House of Commons Standing Committee on Finance to present a pre-budget submission on behalf of members.

To support the work of foundations interested in mission-related investing, PFC collaborated with Community Foundations of Canada to commission a publication on current mission investing models in Canada and a guide to the legal framework for MRI.

In 2011 PFC is continuing to develop the opportunities for connection and networking. A major event will be our fourth national conference in Toronto in October 2011, on the theme of ***Changing Philanthropy: New Visions, New Voices***.

# 2010 @ a Glance

## Publications:

*Good Governance: A Guide for Canadian Foundations*

*The State of Community/Mission Investment of Canadian Foundations*

## Newsletters and advisories:

*10 issues of our e-newsletter*

*2 legal & regulatory updates*

## Research:

*2010 human resources and salary survey*

*2010 investment & disbursement policies survey*

## Web site:

*An average of 211 visits to our website daily*

*Over 50 new resources added to the site in 2010*

## Most popular downloads:

*PFC e-newsletter downloaded 586 times*

*Starting a Foundation downloaded 189 times*



*PFC's new Good Governance: A Guide for Canadian Foundations has become the "go to" governance resource for The Lawson Foundation. Comprehensive and easy to use, the Guide is an essential tool to help new and seasoned Directors understand and carry out their fiduciary responsibilities. It is the centre piece of our Board orientation and the prime resource for our Governance Committee.*

Angie Killoran, Executive Director  
The Lawson Foundation

# Our Members

*\* New members in 2010*

The ALVA Foundation, Toronto  
The ASPER Foundation, Winnipeg\*  
The ATKINSON Charitable Foundation, Toronto  
The Ralph M. BARFORD Foundation, Toronto  
BEALIGHT Foundation, Toronto  
de Gaspé BEAUBIEN Foundation, Montréal  
Max BELL Foundation, Calgary  
Fondation Famille BENOÎT, Montréal  
J. P. BICKELL Foundation, Toronto  
S.M. BLAIR Family Foundation, Toronto  
Fondation J. Armand BOMBARDIER, Montréal  
The BOREALIS Foundation, Stittsville  
The BRANSCOMBE Family Foundation, Niagara Falls  
BRIDGEWAY Foundation, Cambridge  
Brian BRONFMAN Family Foundation, Montréal  
Claudine and Stephen BRONFMAN Family Foundation, Montréal  
The BURNS Memorial Fund, Calgary  
BUTLER Family Foundation, Edmonton  
The CARRERA Foundation, Calgary  
CARTHY Foundation, Calgary  
CGOV Foundation, Toronto  
Fondation Lucie et André CHAGNON, Montréal  
The Arthur J.E. CHILD Foundation, Calgary  
The CLOVERLEAF Foundation, Waterloo\*  
Harry and Martha COHEN Foundation, Calgary  
The COLE Foundation, Montréal  
The COUNSELLING Foundation of Canada, Toronto  
The CRB Foundation, Montréal  
DELOITTE & Touche Foundation Canada, Toronto  
The Catherine DONNELLY Foundation, Toronto  
DONNER Canadian Foundation, Toronto  
The DRUMMOND Foundation, Montréal  
Fondation DUFRESNE et Gauthier, Québec  
The EJLB Foundation, Montréal  
Sir Joseph FLAVELLE Foundation, Toronto  
GALIN Foundation, Toronto  
GELMONT Foundation, Montréal  
Colin B. GLASSCO Charitable Foundation for Children, Calgary  
GOOD Foundation Inc., London  
Walter and Duncan GORDON Foundation, Toronto  
The R K GRANT Family Foundation, Victoria\*  
GREEN SHIELD Canada Foundation, Toronto\*  
Lyle S. HALLMAN Foundation, Kitchener  
HARBINGER Foundation, Toronto  
HAYNES-CONNELL Foundation, Toronto  
Lotte and John HECHT Memorial Foundation, Vancouver  
The HELDERLEIGH Foundation, Winona, ON  
Fondation Sibylla HESSE, Longueuil, QC  
The HUNTER Family Foundation, Calgary  
The HYLCAN Foundation, Montréal  
Charles H. IVEY Foundation, Toronto  
The Ron JOYCE Foundation, Burlington, ON\*

The KAHANOFF Foundation, Calgary  
The Henry and Berenice KAUFMANN Foundation, Montréal  
LAIDLAW Foundation, Toronto  
The LAWSON Foundation, London  
The Eva LEFLAR Foundation, Burlington, ON  
The LUPINA Foundation, Toronto  
MACKENZIE Financial Charitable Foundation, Toronto  
The Charles and Mary MACLENNAN Foundation, Truro, NS  
Fondation René MALO, Montréal  
MARIGOLD Foundation Ltd., Calgary  
MARTIN Aboriginal Education Initiative, Montréal\*  
The MASTERCARD Foundation, Toronto  
The MAYTREE Foundation, Toronto  
The Margaret and Wallace McCAIN Family Foundation, Toronto  
The J. W. McCONNELL Family Foundation, Montréal  
The McLEAN Foundation, Toronto  
T. R. MEIGHEN Family Foundation, Toronto  
George Cedric METCALF Charitable Foundation, Toronto  
The MOLSON Foundation, Montréal  
MUSAGETES Foundation, Guelph, ON\*  
The MUTTART Foundation, Edmonton  
The NEPTIS Foundation, Toronto  
NEWTON Foundation, Montréal  
NICKLE Family Foundation, Calgary  
NORLIEN Foundation, Calgary  
Fondation ONE DROP, Montréal  
The PALOMA Foundation, Toronto  
The PATERSON Foundation, Thunder Bay  
Fondation PATHONIC, Kirkland, QC  
The PLURALISM Fund, Toronto\*  
Jimmy PRATT Foundation Inc., St. John's, NL\*  
Fondation PRÉFONTAINE-HUSHION, Montréal  
PRIVATE Giving Foundation, Toronto  
RBC Foundation, Toronto\*  
ROASTERS Foundation, Montréal  
ROZSA Foundation, Calgary  
The SALAMANDER Foundation, Toronto  
Jeanne SAUVÉ Foundation, Montréal  
The SCOTLYN Foundation, Canmore  
The SILVER Tree Foundation, Toronto  
The SOBEY Foundation, Stellarton, NS  
The Belinda STRONACH Foundation, Toronto  
TIDES Canada Foundation, Vancouver  
The TOSKAN Casale Foundation, Toronto  
TRINITY Development Foundation, Ottawa\*  
The Pierre Elliott TRUDEAU Foundation, Montréal  
VIEWPOINT Charitable Foundation, Calgary  
Eric T. WEBSTER Foundation, Kirkland, QC\*  
R. Howard WEBSTER Foundation, Montréal  
The Mike WEIR Foundation, Oakville  
The WINDSOR Foundation, Halifax  
The Michael YOUNG Family Foundation, Toronto



## Board Members 2010-2011



**Back row from left to right:** Angie Killoran, Bradley Offman, James M. Good, Nancy Rosenfeld, Marion F. Gracey, Graham F. Hallward, Susan Killam, David Peever, Mary Rozsa de Coquet

**Seated:** Liza Goulet, Alexander J. Houston, Shira Herzog, Hilary Pearson, Nicole Beaudoin

**Not present in the photo:** Peter Warrian, Claude Chagnon, Hulene Montgomery, Bruce Lawson

### Chair

**Shira Herzog**, President and CEO  
The Kahanoff Foundation, Calgary

### Past Chair

**Peter Warrian**, Managing Director  
The Lupina Foundation, Toronto

### Vice-Chair

**James M. Good**, President  
The Good Foundation Inc., London

### Treasurer

**Graham F. Hallward**, President  
The Alva Foundation, Toronto

### Secretary

**Mary Rozsa de Coquet**, President  
Rozsa Foundation, Calgary

**Nicole Beaudoin**, Director  
Fondation J. Armand Bombardier,  
Montréal

**Claude Chagnon**, President  
Fondation Lucie et André Chagnon,  
Montréal

**Marion F. Gracey**, President of the Board  
The Muttart Foundation, Edmonton

**Alexander J. Houston**, President  
George Cedric Metcalf Charitable Foundation,  
Toronto

**Susan Killam**, President  
The Windsor Foundation, Halifax

**Angie Killoran**, Executive Director  
The Lawson Foundation, London

**Bruce Lawson**, Executive Director  
The Counselling Foundation of Canada,  
Toronto

**Hulene Montgomery**, Executive Director  
Lyle S. Hallman Foundation, Kitchener

**Bradley Offman**, President  
MacKenzie Financial Charitable Foundation,  
Toronto

**David Peever**, Executive Director  
Nickle Family Foundation, Calgary

**Nancy Rosenfeld**, President  
Claudine and Stephen Bronfman Family  
Foundation, Montréal

### Retired from the Board in 2010

**Joy Calkin**, Past President  
The Muttart Foundation, Edmonton

**Patrick Johnston**, President and CEO  
Walter and Duncan Gordon Foundation, Toronto

**Janis Levine**, Co-President  
The Henry and Berncie Kaufmann Foundation,  
Montréal

**Jean-Maurice Saulnier**, Vice-President, Legal  
and Corporate Affairs, Fondation Lucie et André  
Chagnon, Montréal

**Norman Webster**, President  
R. Howard Webster Foundation, Montréal



## Staff

**From left to right:**

Communications Officer: **Jacqueline Reid**

Director, Research & Member Services: **Liza Goulet**

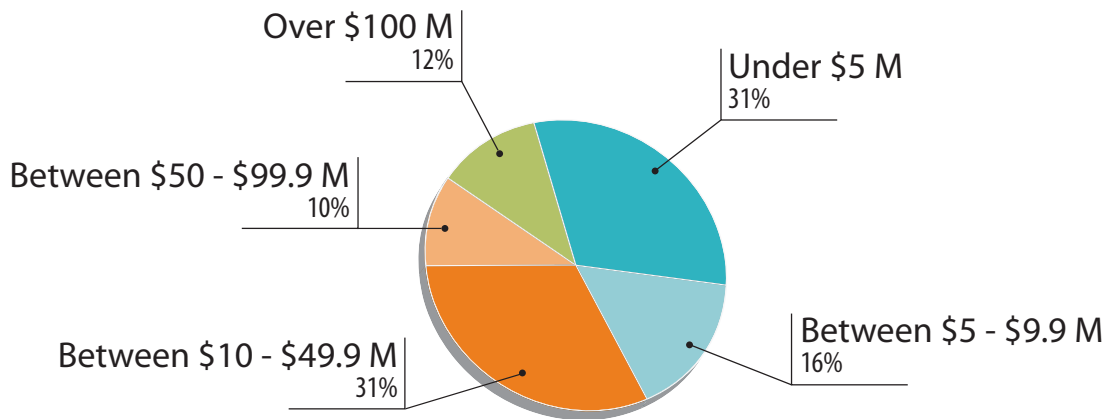
President & CEO: **Hilary Pearson**

Administrator: **Micheline Parent**

## About our Members

In 2010 we welcomed a record 12 new members, the largest number in a single year since the association began. At the end of 2010 PFC had over 100 members. The majority are family foundations of varying sizes and interests. Our membership also includes public foundations, corporate foundations, charitable organizations that are primarily grantmakers, and donor-advised funds.

### Distribution of Members by Asset Size



Our members collectively manage almost \$7.5 billion in assets – close to half the total assets of all private foundations in Canada.

47% of PFC members have assets under \$10 million; 22% have assets over \$50 million; the remaining 31% are mid-sized foundations with assets between \$10 million and \$49.9 million.





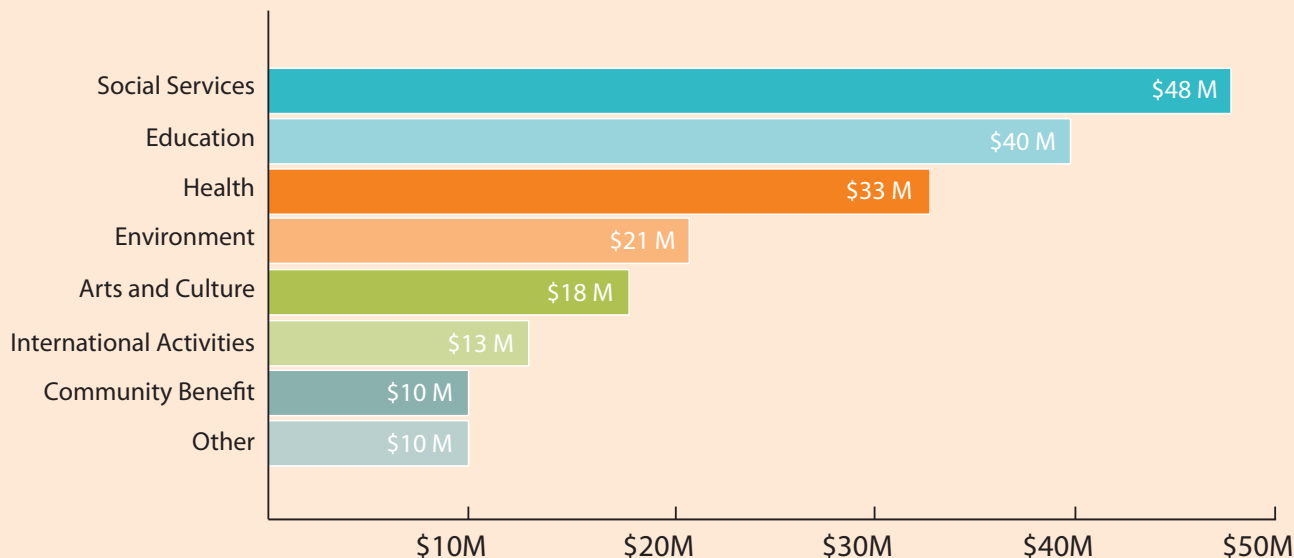
## Grants and Charitable Activities

PFC members granted over \$192 million in 2009. Close to two-thirds of all grants were directed to social services, education and health. Grants to the arts and environmental groups represented another 20%. Members also disbursed over \$117 million directly on foundation-managed charitable programs and activities.

26% of members restrict their grants to a particular geographic region and 34% focus on a specific target population (mostly children and youth).

### Distribution of member grants by sector

*(in millions of dollars, based on 2008-2009 data from 105 PFC members)*



## Staff



51 percent of PFC member foundations employ full-time staff; close to 13% of foundations have part-time paid staff only and 35% of foundations have no paid staff and are run by volunteers.

PFC member foundations have an average of seven Board members.

# Summary Financial Statements

The accompanying summary financial statements, which comprise the summary statement of financial position as at December 31, 2010, the summary statement of revenue and expenditures, summary statement of changes in net assets and summary cash flow statement for the year then ended, are derived from the audited financial statements of Philanthropic Foundations Canada / Fondations Philanthropiques Canada for the year ended December 31, 2010. We expressed an unmodified audit opinion on those financial statements in our report dated March 22, 2011. Those financial statements, and the summary financial statements, do not reflect the effects of events that occurred subsequent to the date of our report on those financial statements.

The summary financial statements do not contain all the disclosures required by Canadian generally accepted accounting principles. Reading the summary financial statements, therefore, is not a substitute for reading the audited financial statements of Philanthropic Foundations Canada / Fondations Philanthropiques Canada.

## Management's Responsibility for the Summary Financial Statements

Management is responsible for the preparation of a summary of the audited financial statements in accordance with the guidelines set by the audit committee.

## Auditor's Responsibility

Our responsibility is to express an opinion on the summary financial statements based on our procedures, which were conducted in accordance with Canadian Auditing Standards (CAS) 810, "Engagements to Report on Summary Financial Statements."

## Opinion

In our opinion, the summary financial statements derived from the audited financial statements of Philanthropic Foundations Canada / Fondations Philanthropiques Canada for the year ended December 31, 2010 are a fair summary of those financial statements, in accordance with the guidelines set by the audit committee.

MONGIAT•BERNUCCI <sup>1</sup>

Montreal, March 22, 2011

<sup>1</sup> By Michel Bernucci, CA auditor

## Summary Statement of Financial Position

December 31	2010	2009
<b>CURRENT ASSETS</b>		
Cash	\$ 229,008	\$ 224,348
Term deposits and accrued interest	517,091	527,427
Accounts receivable	11,562	-
Goods and services tax recoverable	4,841	7,265
Prepaid expenses	12,593	-
	<b>775,095</b>	<b>759,040</b>
<b>CAPITAL ASSETS</b>		
	<b>3,190</b>	<b>1,521</b>
	<b>\$ 778,285</b>	<b>\$ 760,561</b>
<b>CURRENT LIABILITIES</b>		
Accounts payable and accrued liabilities	\$ 30,744	\$ 25,377
Deferred contributions	91,693	62,044
	<b>122,437</b>	<b>87,421</b>
<b>NET ASSETS</b>		
Unrestricted	252,658	271,619
Invested in capital assets	3,190	1,521
Internally restricted	400,000	400,000
	<b>655,848</b>	<b>673,140</b>
	<b>\$ 778,285</b>	<b>\$ 760,561</b>

## Summary Statement of Revenue and Expenditures

For the year ended December 31	2010	2009
<b>REVENUE</b>		
Membership dues	\$ 435,123	\$ 435,313
Donations for programming and other	40,921	36,250
Program fees	16,728	4,660
Interest	12,814	22,781
	<b>505,586</b>	499,004
<b>EXPENDITURES</b>		
Salaries and benefits	357,641	345,113
Office operations	61,286	57,893
Meetings and workshops	31,083	12,764
Professional fees	23,114	29,056
Communications and website	19,627	27,687
Travel and conferences	17,698	19,036
Publications	11,327	-
Amortization expense	1,102	2,613
	<b>522,878</b>	494,162
<b>Excess (deficiency) of revenue over expenditures before the under noted item</b>	<b>(17,292)</b>	4,842
Net excess of revenue over expenditures on the following:		
•PFC conference - The Pulse of Philanthropy (net)	-	14,944
<b>Excess (deficiency) of revenue over expenditures for the year</b>	<b>\$ (17,292)</b>	<b>\$ 19,786</b>

For a copy of our complete 2010 financial statements, please contact PFC.

## Summary Statement of Changes in Net Assets

For the year ended December 31	2010			2009	
	Unrestricted	Invested in Capital Assets	Internally Restricted	Total	Total
<b>Balance, beginning of the year</b>	\$ 271,619	\$ 1,521	\$ 400,000	<b>\$ 673,140</b>	\$ 653,354
Excess (deficiency) of revenue over expenditures for the year	(16,190)	(1,102)	-	<b>(17,292)</b>	19,786
Investment in capital assets	(2,771)	2,771	-	-	-
<b>Balance, end of year</b>	<b>\$ 252,658</b>	<b>\$ 3,190</b>	<b>\$ 400,000</b>	<b>\$ 655,848</b>	<b>\$ 673,140</b>

Please visit our web site at [pfc.ca](http://pfc.ca) for information about philanthropy and grant-making. You will also find previous issues of our newsletters and research reports as well as information on upcoming events. Full 2010 financial statements are also posted.



Philanthropic  
*foundations*  
Canada

*Fondations*  
philanthropiques  
Canada

555 René-Lévesque Blvd. West  
Suite 900  
Montréal, Québec  
H2Z 1B1

Tel. : 514-866-5446  
Fax : 514-866-5846  
E-mail : [general@pfc.ca](mailto:general@pfc.ca)